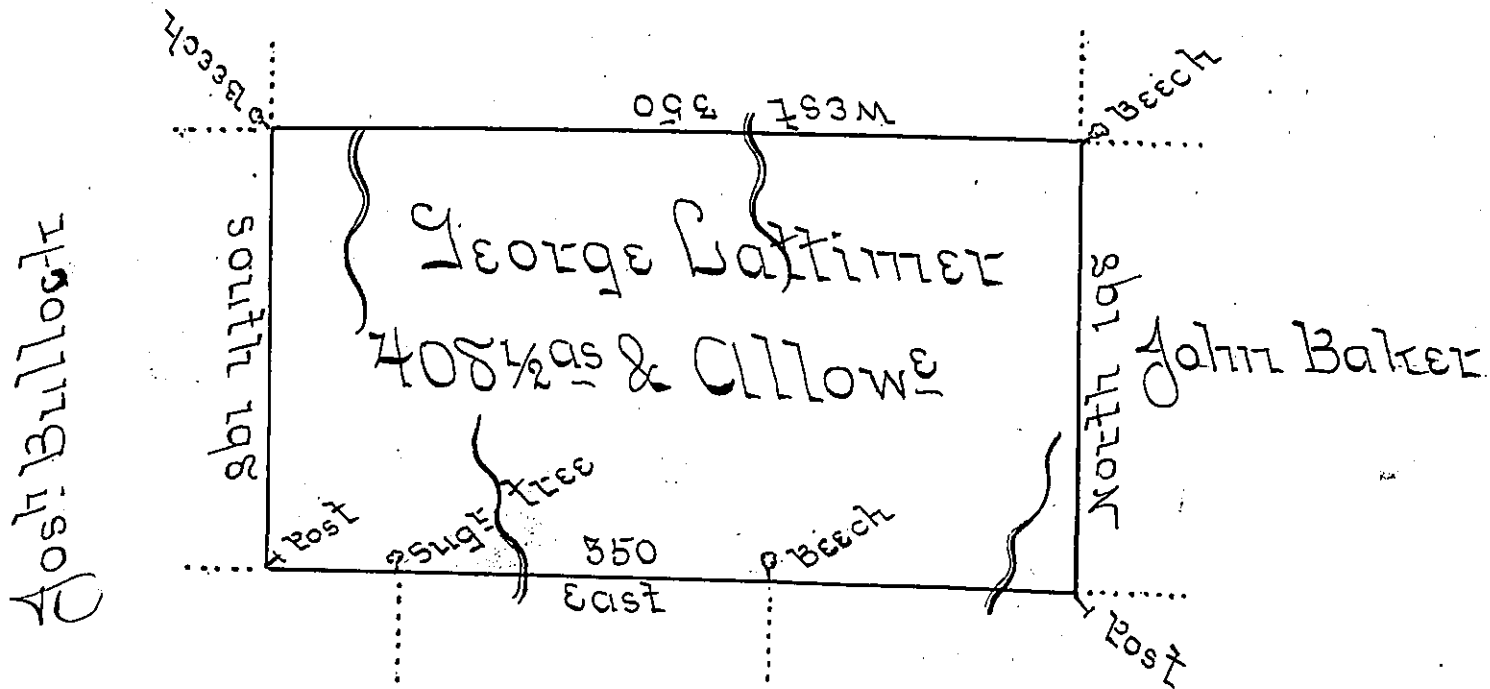


Benedict Dorsey



Thos Cadwallader Wm Allen Jas Allen

A Draught of a tract of land Called _____ situate
 joining land Surveyed for Benedict Dorsey and others in
 Luzerne (former obliterated County) containing four
 Hundred & Eight acres 1/2 and allowe of six p Cent for
 Roads &c Surveyed for George Battimer the 16th Day of Nov^r
 1786 in Pursuance of a Warrant dated the 24th Day of
 August 1784 - - - - by

Wm Gray U.S

John Lukens Esq^r }
 Survey Gen^l - }

IN TESTIMONY that the above is a copy of the original remaining on file in
 the Department of Internal Affairs of Pennsylvania, made
 conformably to an Act of Assembly approved the 16th day of
 February, 1833, I have hereunto set my Hand and caused
 the Seal of said Department to be affixed at Harrisburg,
 this fourth day of March 1902,-

James W. Latta
 Secretary of Internal Affairs.